



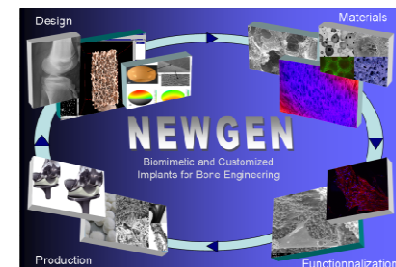
- ✓ **Complete denomination:** University College London
- ✓ **Location (city, country):** London
- ✓ **Director:** **Professor Michael Arthur**
- ✓ **Contact person in NEWGEN:** Dr Chaozong Liu
- ✓ **Working Group involvement:** WG2 / WG3 / WG4
- ✓ **Staff:** Prof Gordon Blunn, Dr Maryam Tamaddon

- ✓ **Research topics:** Development of Joint implants; scaffold innovation for cartilage and bone tissue repair and regeneration; intervention of osteoarthritis development; disease-relevant human tissue explant model for implant evaluation.

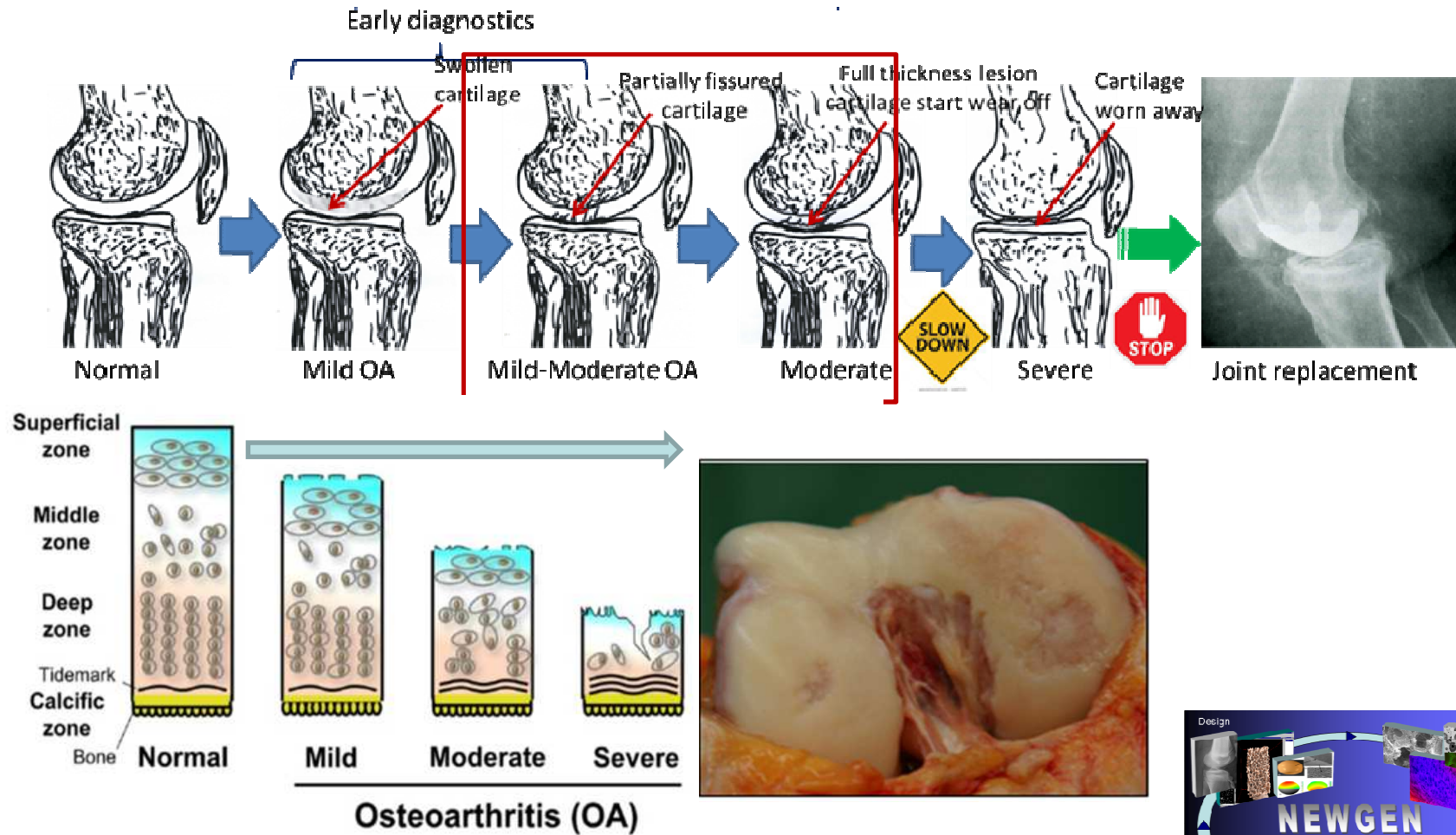
- ✓ **Researchers expertises:**
 - ❖ Scaffold processing,
 - ❖ implant design
 - ❖ In vitro & in vivo study
 - ❖ Surface processing

UCL IOMS

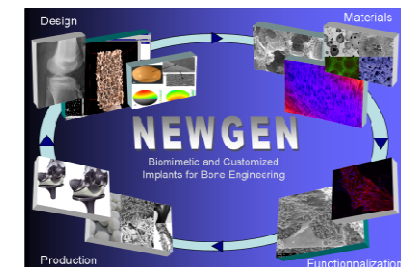
University College London
Royal National Orthopaedic Hospital
London HA7 4LP, UK



COST Action MP1301

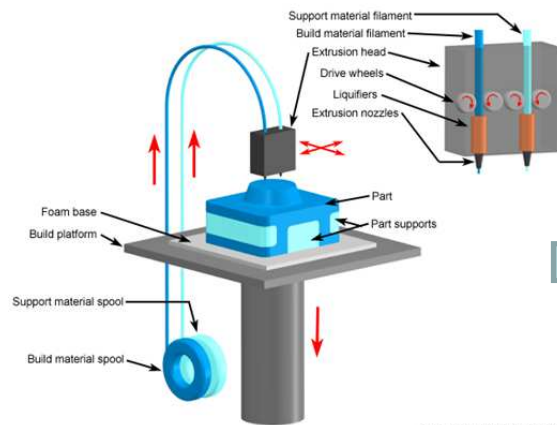


Biomaterials innovation for Intervention of OA at early stage

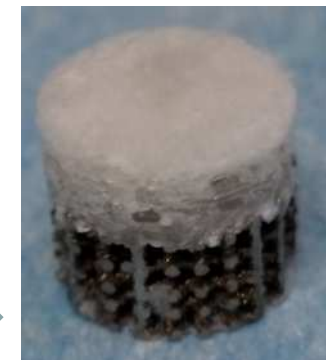
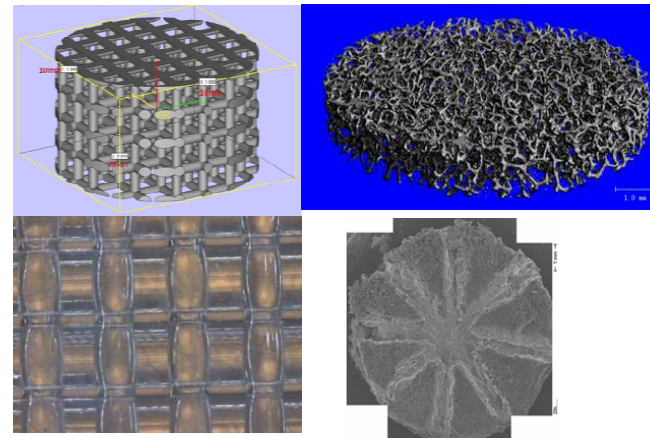


COST Action MP1301

Biomimetic osteochondral scaffold for early intervention of OA

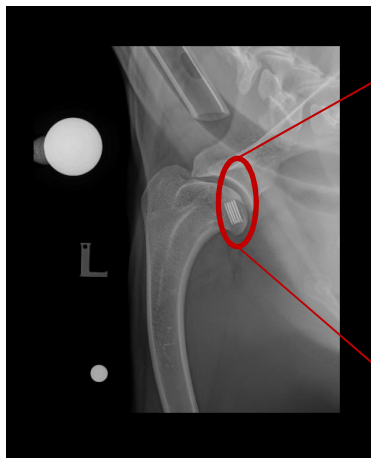
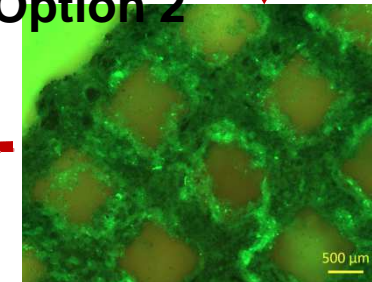


Copyright © 2008 CustomPartNet

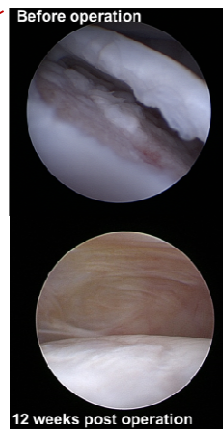


Seeding cells

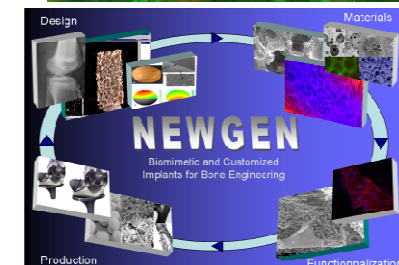
Option 2



12 Week post operation



- Human tissue explant model
- Sheep condyle model
- Clinical dog model



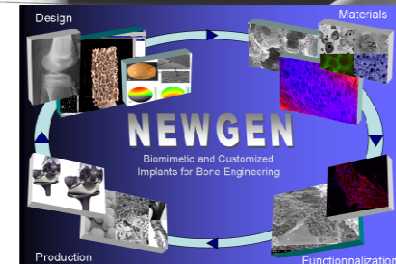
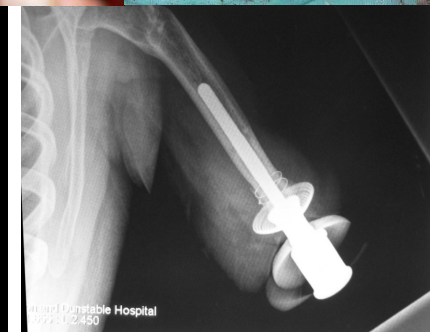
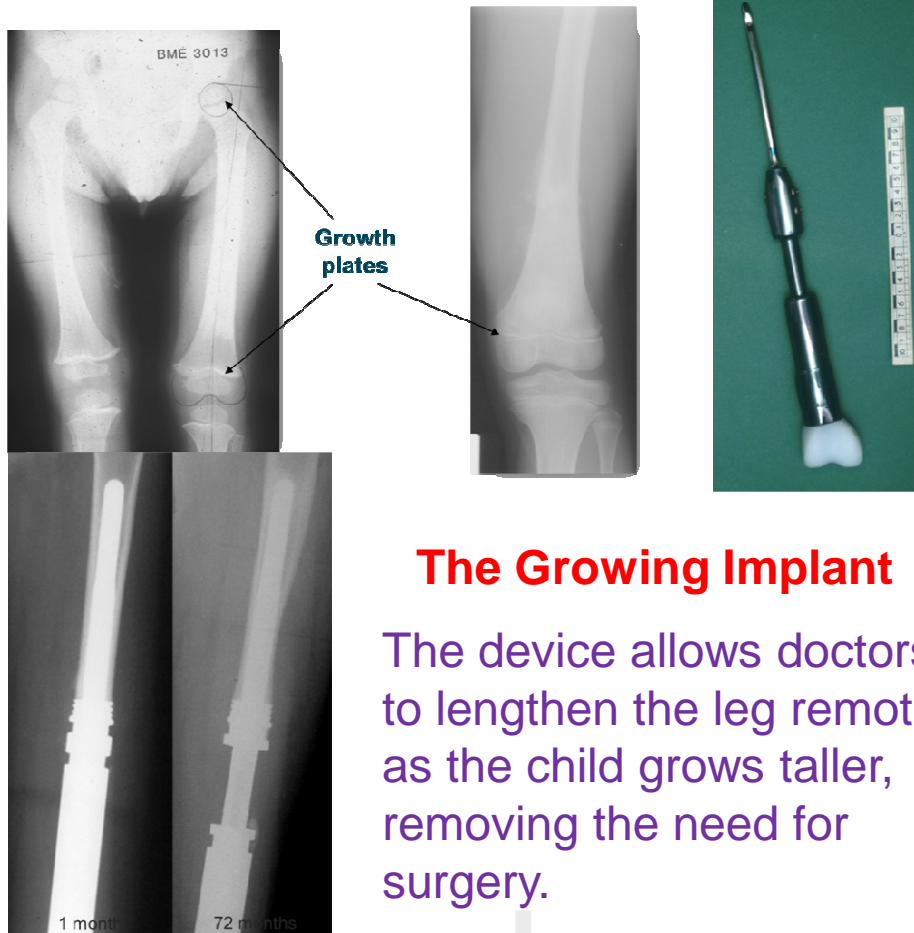
COST Action MP1301

Channel 4 SuperVet Bionic Specials: Flo & Izzy

(<http://www.channel4.com/programmes/the-supervet/on-demand/64003-002>).

Bionic therapy for Orthopaedics

Intraosseous Transcutaneous Amputation Prostheses (ITAP)



COST Action MP1301

Retrieval Implant Analysis: How? Why? What Now?



Fears Over Hip Replacement 'Poisoning'



Thousands of thousands of British patients with metal hip replacements could be at risk of being poisoned by them, it is feared.

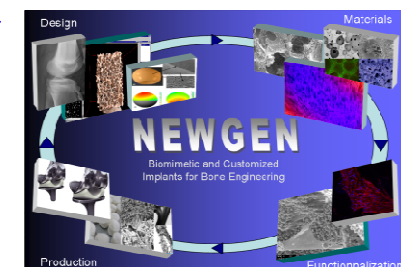
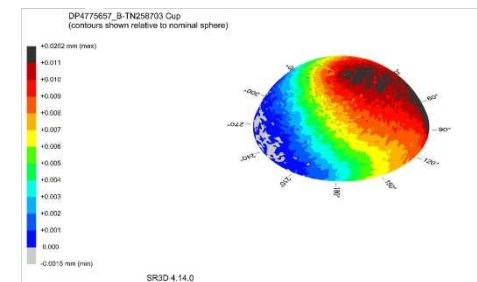
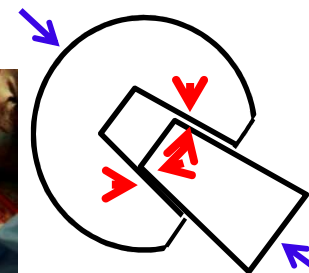
Needs clinical and retrieval analysis



Surgeon related

Implant related

Patient related



COST Action MP1301