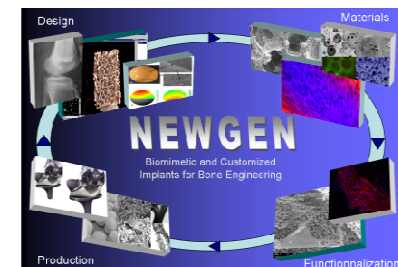


- ✓ **Complete denomination:** Lithoz GmbH
- ✓ **Location (city, country):** Vienna, Austria
- ✓ **Director:** Dr. Johannes Homa, DI Dr. Johannes Patzer
- ✓ **Contact person in NEWGEN:** Dr. Johannes Homa and
Dr. Martin Schwentenwein
- ✓ **Working Group involvement:**
- ✓ **Staff:** 21 employees
- ✓ **Research topics:** Materials, machine, software and processes for Additive Manufacturing
- ✓ **Researchers expertises:** Additive Manufacturing



Name/Acronym

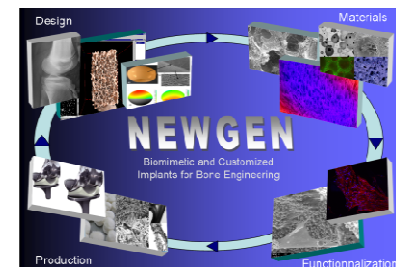
Lithoz GmbH
Mollardgasse 85A/ 2/64-69
1060 Vienna - AUSTRIA



COST Action MP1301

Lithoz is the system provider for additive manufacturing of high-performance ceramics

- only commercially available AMT for dense and precise ceramic parts
- Sale of machine and material
- Customized solutions
- Development competency for the whole process chain



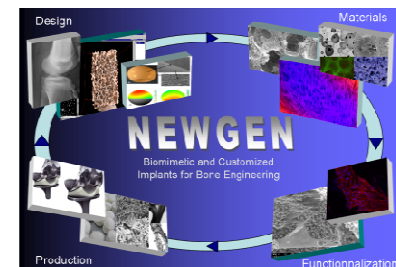
COST Action MP1301

Lithography-based **C**eramic **M**anufacturing

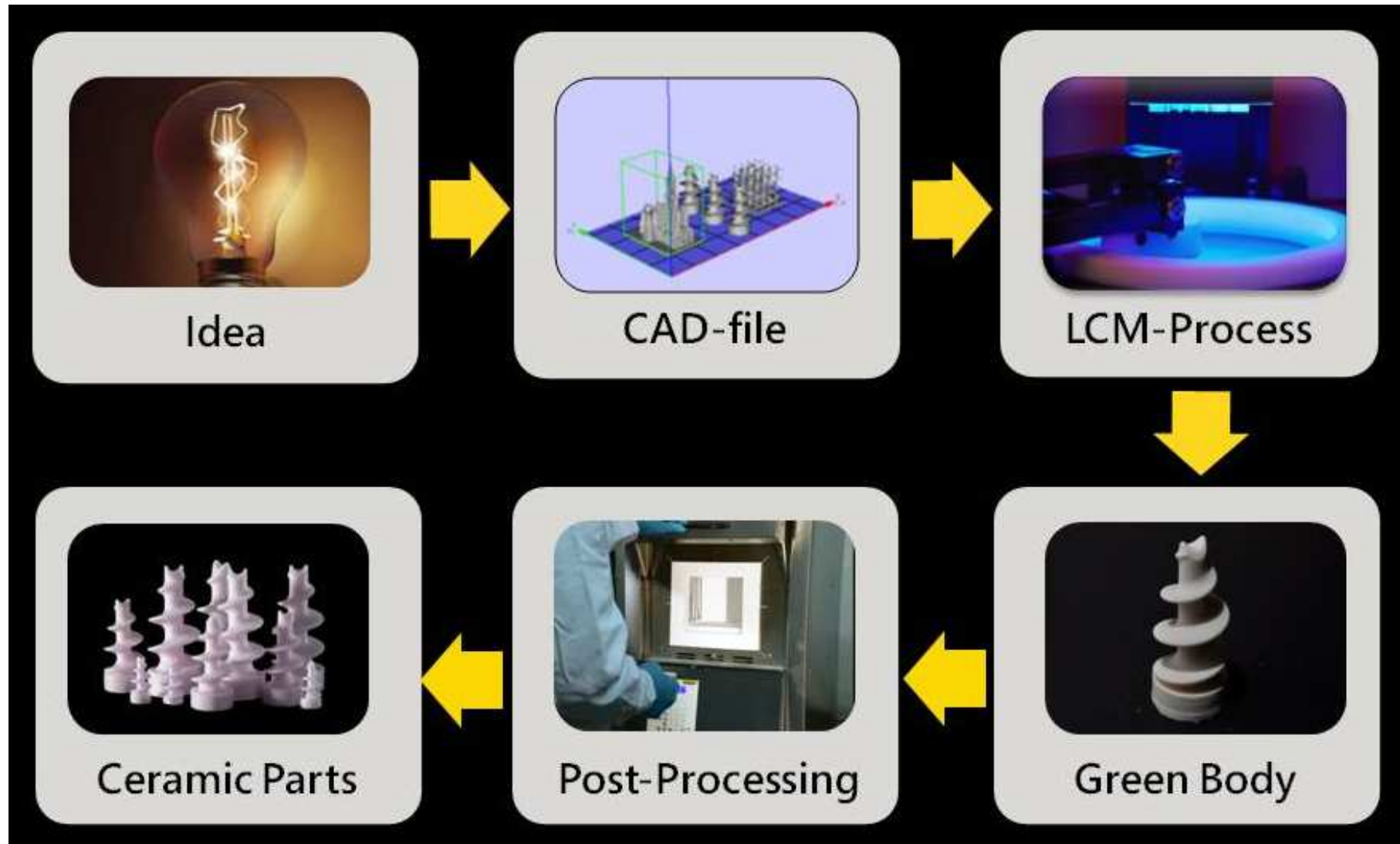
= a patented 3D-Printing technique for ceramic material

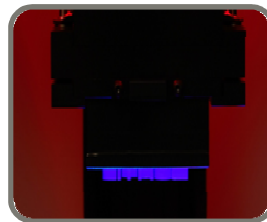
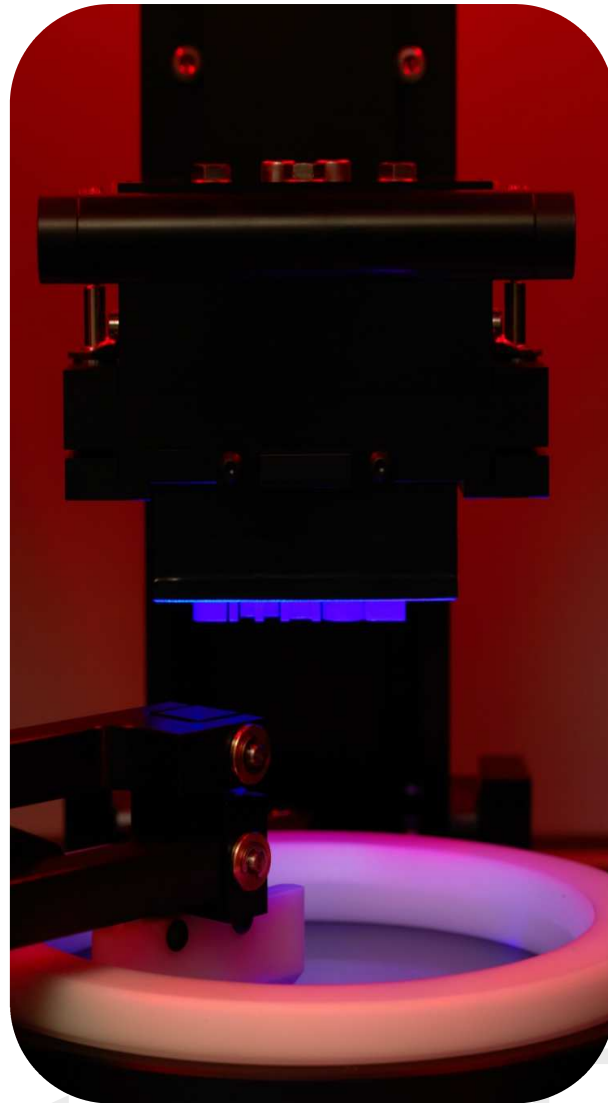
- High precision
- Good tolerance and reproducibility
- Fine details and structures

➔ with same material properties as conventional forming methods

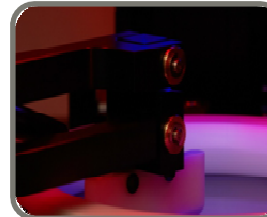


COST Action MP1301

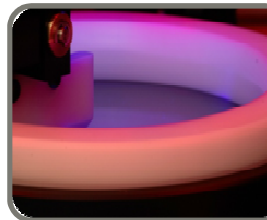




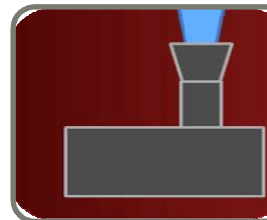
Building-
platform



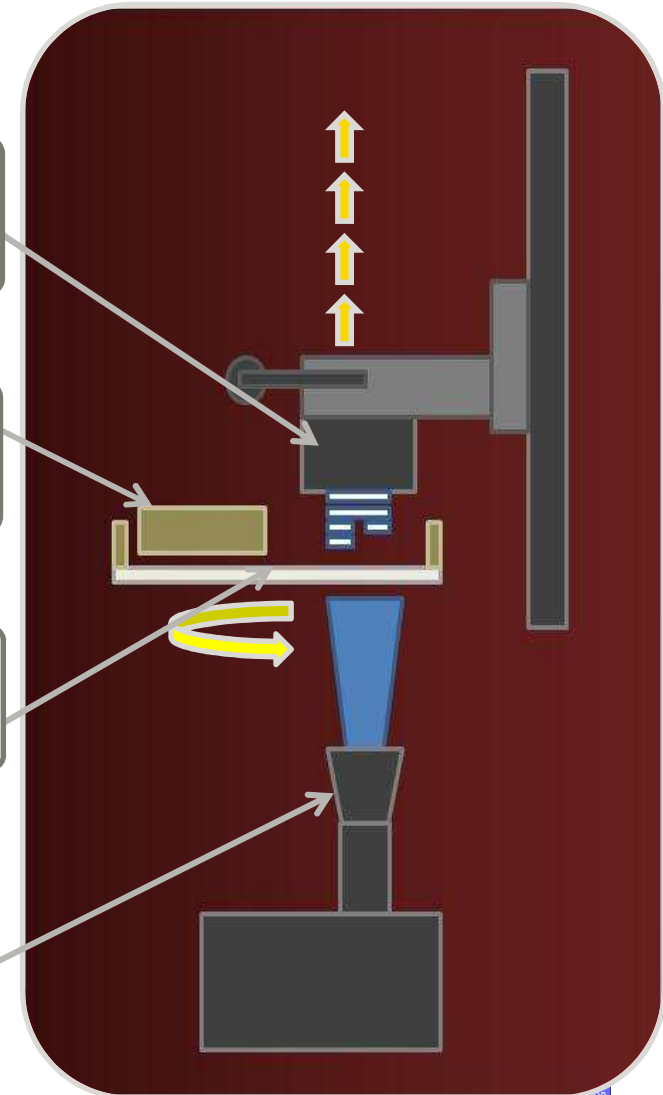
Viper
blade



Vat

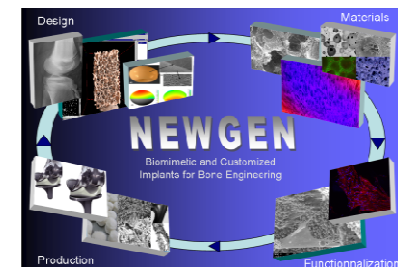
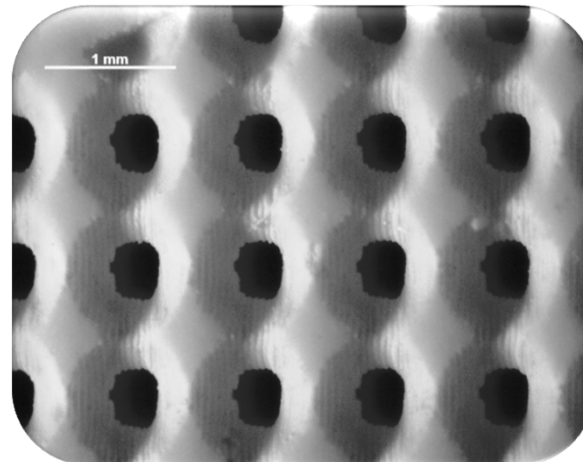


Light-
Engine

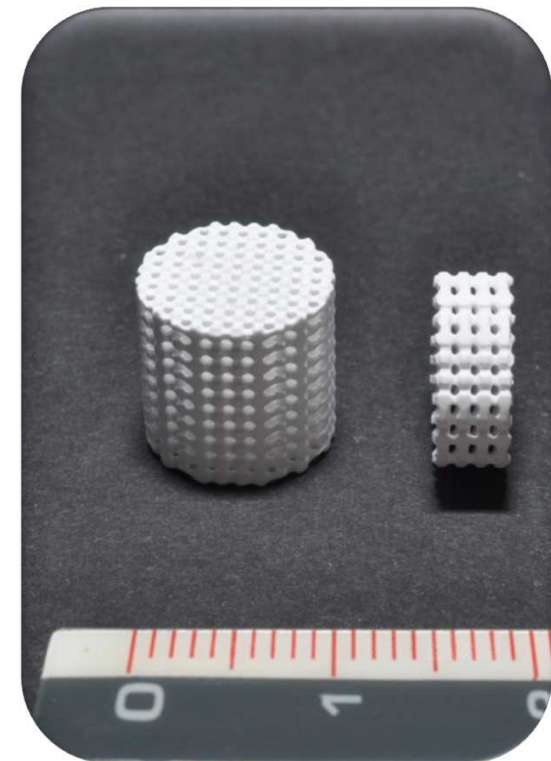
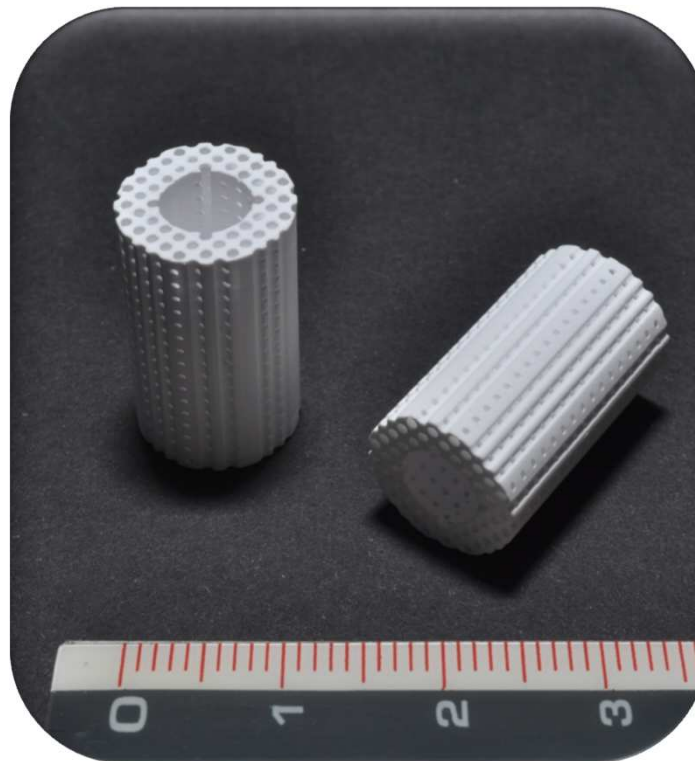




- β -Tricalcium phosphate
- Bioresorbable
- Customized implants
- Defined macroporosity



COST Action MP1301



Engineers are specialized in:

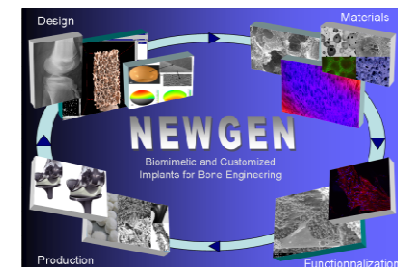
- Polymer chemistry
- Ceramics
- Mechanical Engineering
- Electronics
- Application Development
- Software Development



The whole process chain is covered within the company



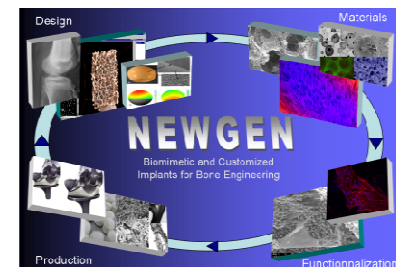
Development competency for the whole process chain



COST Action MP1301

LCM can offer

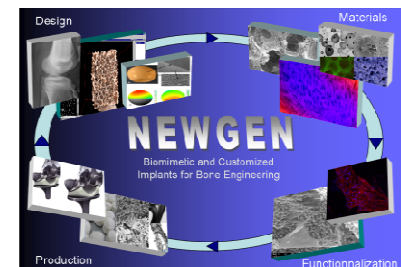
- High resolution
- High surface quality
- Pores and pore structures of scaffolds can be designed
- Hardly any restriction concerning the used powder
- Small and delicate structures



COST Action MP1301

Lithoz can offer

- Competence in the whole process chain
- Development of customized solutions
- Machine capacities
- Research facilities
- Feasibility studies



COST Action MP1301